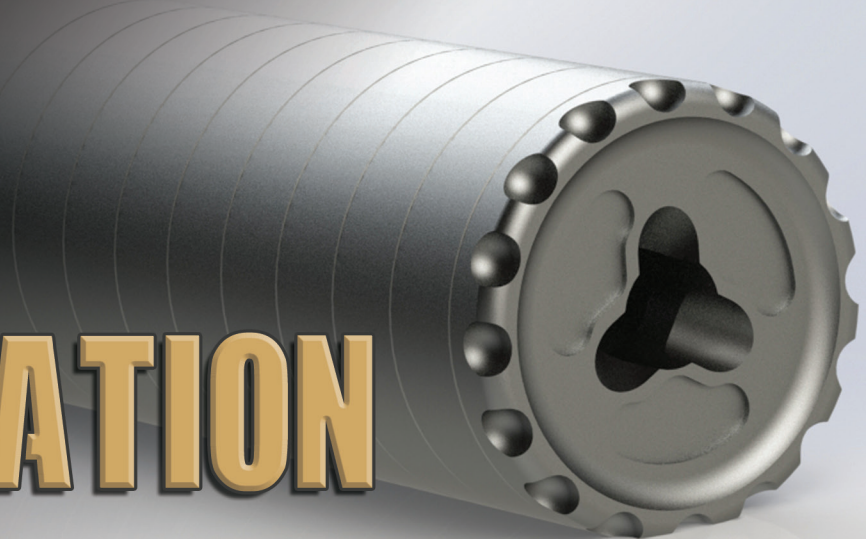


THE NEXT GENERATION



With the ever growing popularity of the YHM® Turbo® K's adaptable interface, it was only a matter of time before the rest of the YHM® suppressor product line up followed suit



Resonator® R2

The new adaptable interface (as seen on the Turbo® K) has revolutionized the way people make their decisions on buying a centerfire rifle suppressor. No longer are they limited to just one brand's attachment system, but can now easily swap suppressors between hosts without having to worry about purchasing a whole new set of muzzle devices to accommodate their new suppressor purchase. So, why not take this new innovative system and apply it to our existing lineup that's already been proven to be some of the best in the segment? Of course, we did just that along with a few other aesthetic updates to both the YHM® Resonator® and Turbo® sound suppression systems.

Adaptable Interface:

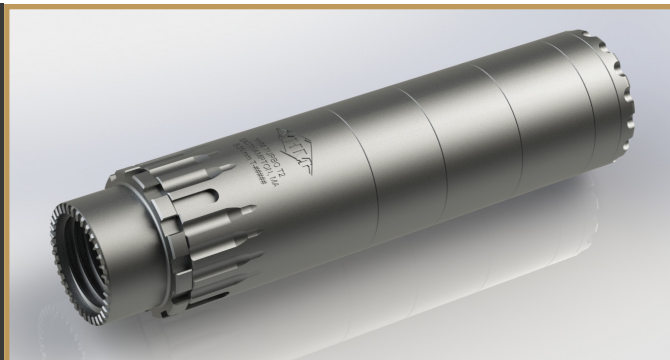
Just like the Turbo® K, the new versions of the Resonator® and the Turbo® will come threaded to 1-3/8"-24 to allow for the use of our Phantom® Q.D. Adapter, which is included. The adaptable interface allows the suppressor to utilize many of the available mounting options currently on the market. Included in each package will be two suppressor spanner wrenches to aid in the installation and removal of the adapter.

Aesthetics:

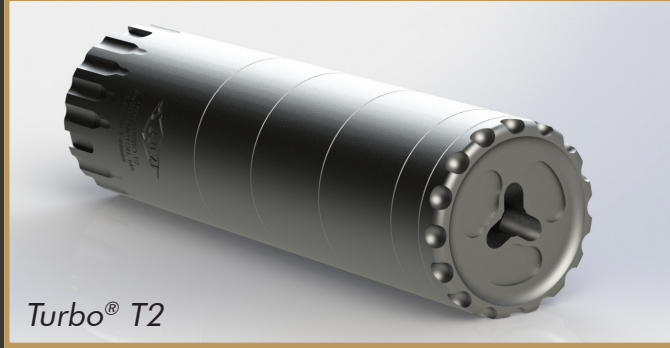
The Resonator®, Turbo®, and Turbo® K have received several aesthetic updates for 2020. The bullet pattern around the base of the suppressor, originally seen on the Turbo® K, now adorns the Resonator® and the Turbo®. This pattern has been updated to accept the spanner wrenches included with your suppressor. We have added a notched rim and tri-port muzzle to the end cap to further enhance the appearance of the suppressors.

Pricing:

Resonator® R2	Turbo® T2	Turbo® K
\$695^{MSRP}	\$525^{MSRP}	\$485^{MSRP}



Turbo® T2



Follow us on



Yankee Hill Machine Co., Inc.
 Firearms & Accessories
 412 Main Street
 Easthampton, MA 01027
 1-877-892-6533